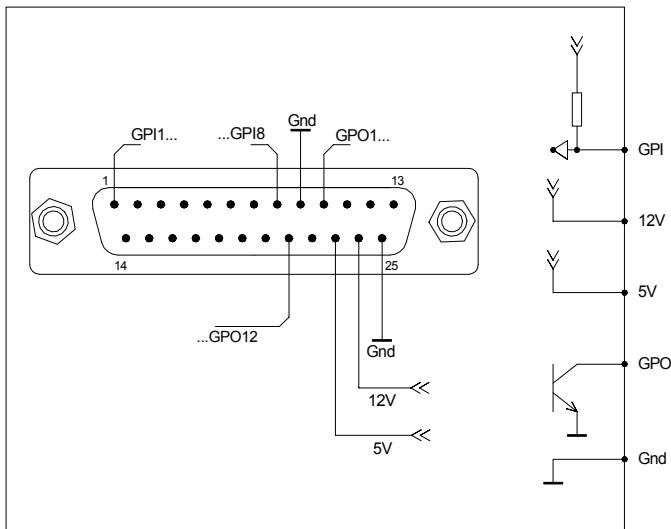


## IMPORTANT

Before using the control ports specified in this drawing, read the associated chapters in the user manual. Improper use may lead to damage of your INTELLIMIX and/or the equipment connected to the GPIs/GPOs.

All examples imply the connection of external voltages: e.g. 5V, 12V or 24V or 0V (Ground). Provided that you consider the restrictions described in the user manual, you may as well use the auxiliary voltages or the Ground Pin of your INTELLIMIX.

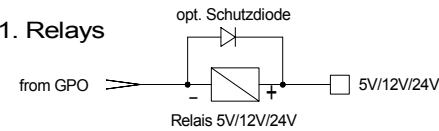
Control Input Ports: GPI 1...8  
Control Output Ports: GPO 1...12



Diese Zeichnung ist unser Eigentum. Jede Vervielfältigung oder Mitteilung ist strafbar und kann gerichtlich verfolgt werden. (Urheberrechtsgesetz, Gesetz gegen unlauteren Wettbewerb, BGB) Technische Änderungen vorbehalten.

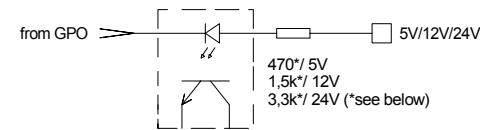
## Examples for GPO - Connections

### 1. Relays



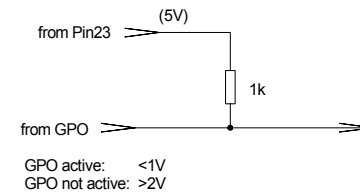
GPO active: Relais triggered

### 2. Optocouplers



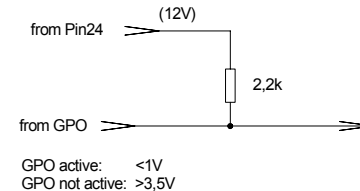
GPO active: Optocoupler triggered

### 3. TTL - Logic



GPO active: <1V  
GPO not active: >2V

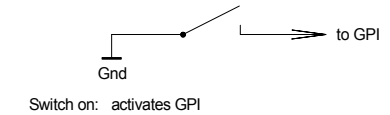
### 4. CMOS - Logic



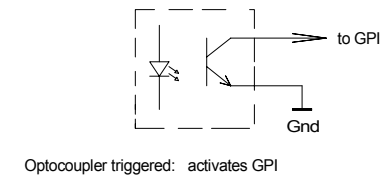
GPO active: <1V  
GPO not active: >3,5V

## Examples for GPI - Connections

### 1. Switches/Relays

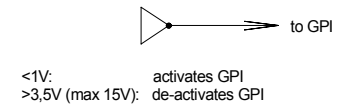


### 2. Optocouplers



Optocoupler triggered: activates GPI

### 3. External Logic



<1V: activates GPI  
>3,5V (max 15V): de-activates GPI

\*The resistor-values are suitable for commonly used optocouplers. It is essential to check whether they match to the type you are using.

**THUM+MAHR**

Heinrich Hertz Str. 1-3  
D-40789 Monheim  
Tel.: 02173 / 9673-0

Connection of Intellimix GPI und GPO

YELLOWTEC - Intellimix - Base Unit

Datei: IMX\_GPIO\_en